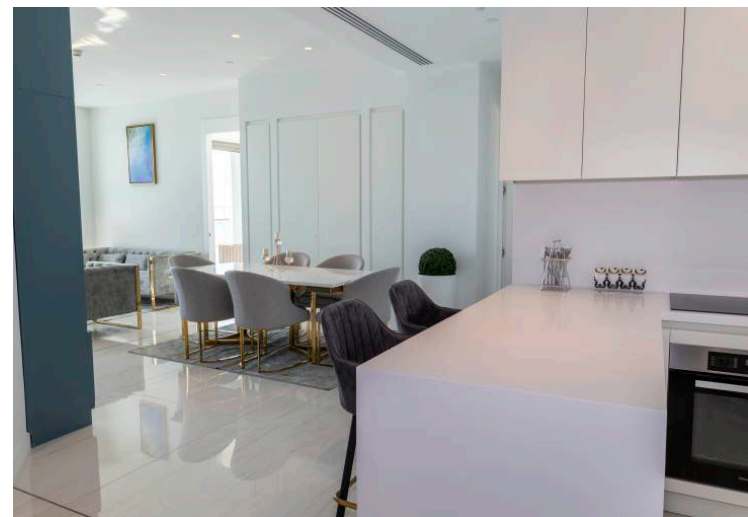
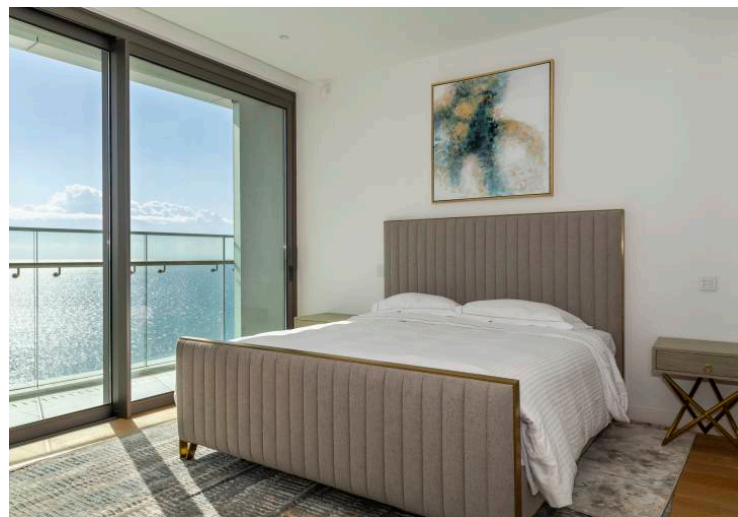
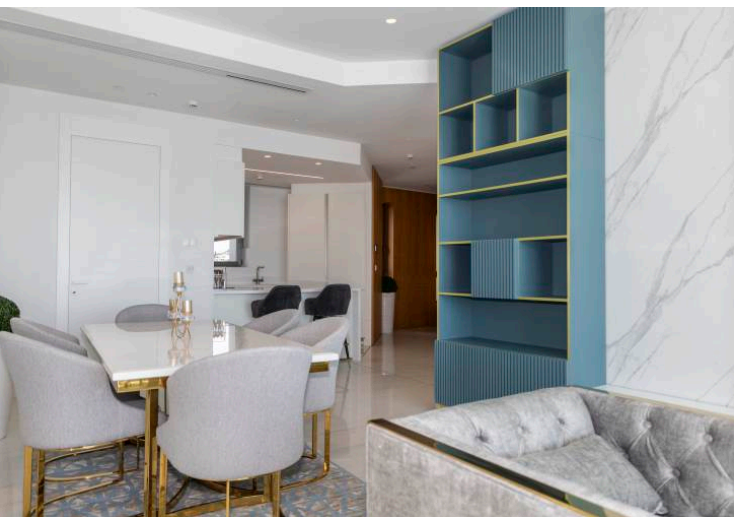




APARTMENT LDM901

**CHESTERTONS**  
*Cyprus Residential*









## LDM901 | 2 Bedroom Apartment

Germasogeia, Limassol

Discover serenity in this inviting 2-bedroom apartment with a versatile study room, 2 bathrooms, and an additional guest toilet, nestled in the sought-after Limassol Del Mar in Germasogeia, Limassol. Experience contemporary living with luxurious finishes, a well-appointed layout, and breathtaking sea views.

This prestigious residential development offers a host of exclusive amenities and services, ensuring a comfortable and elevated lifestyle in one of Limassol's most desirable locations.

- Apartment
- Total Covered Area: 123 m<sup>2</sup>
- 2 Bedrooms
- 2 Bathrooms
- Furnished
- Safe & Friendly Area
- Concierge Services
- Air Conditioning
- Covered Veranda
- Award-winning Architecture
- En-suite bathrooms
- Mediterranean Sea Views
- 24-hour Reception
- Private Parking
- Swimming Pool

**€ 6000** RENT (Per Month)

**Chestertons Cyprus Residential**  
Basilica Gardens Harbour Branch - 1,  
Ledas Street, Block 5 ,8041, Paphos, Cyprus  
info@chestertons.com.cy  
+357 26880124  
chestertons.com.cy



Chesterton Global Ltd trading as Chestertons for themselves and for the vendor of this property whose agents they are, give notice that (i) these particulars do not constitute any part of an offer or contract, (ii) all statements contained within these particulars are made without responsibility on the part of Chestertons or the vendor, (iii) whilst made in good faith, none of the statements contained within these particulars are to be relied upon as a statement or representation of fact, (iv) any intending purchasers must satisfy themselves by inspection or otherwise as to the correctness of each of the statements contained within these particulars, (v) the vendor does not make or give either Chestertons or any person in their employment any authority to make or give representation or warranty whatsoever in relation to this property. Wide angle lenses may be used. ©Copyright Chestertons | Chesterton Global Ltd | Registered Office 40 Connaught Street, Hyde Park, London W2 2AB Registered Company Number 05334580.