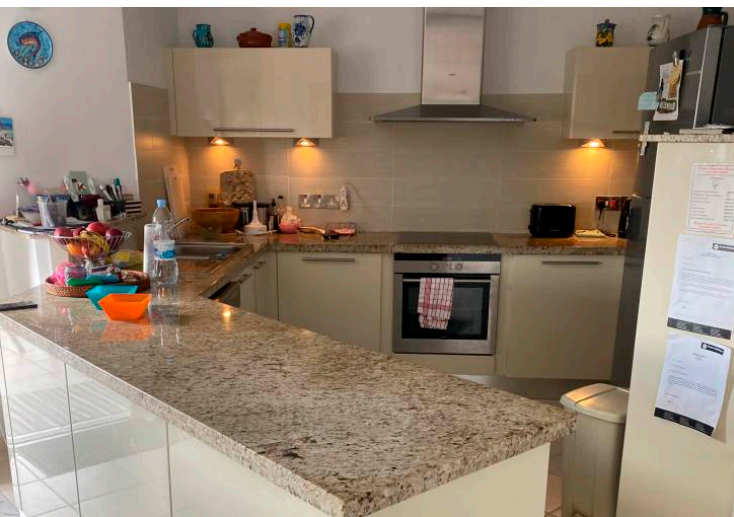




**L**  
LIMNARIA  
GARDENS

APARTMENT 301

**CHESTERTONS**  
*Cyprus Residential*





## 301 | 3 Bedroom Apartment (Block B)

### Kato Paphos

This charming 113 sqm, fully furnished 3-bedroom, 2-bathroom apartment is located in the heart of Kato Paphos, just a short stroll from the picturesque port. The spacious layout is perfect for enjoying the sunny Paphos weather, with bright, airy living spaces throughout.

Conveniently close to local amenities, including shops, restaurants, and entertainment, this apartment offers the best of Mediterranean living. Whether you're relaxing indoors or exploring the vibrant surroundings, you'll love the lifestyle this location provides.

- Apartment
- 3 Bedrooms
- 2 Bathrooms
- Furnished
- Air Conditioning
- Landscaped Gardens
- Safe & Friendly Area
- WiFi

**€ 571,580**  
**FOR SALE**

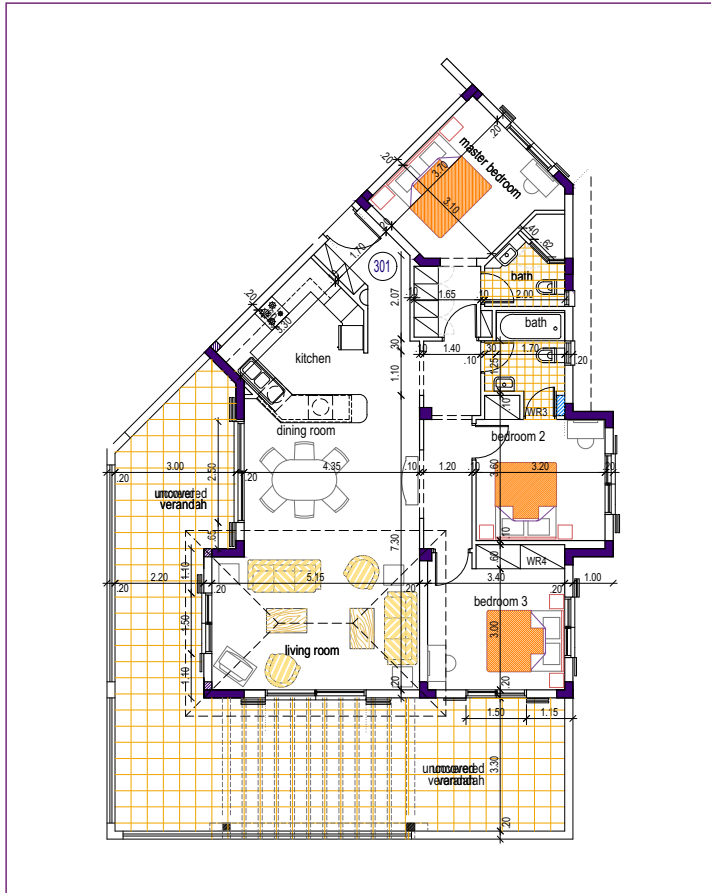
113.00 m<sup>2</sup> COVERED AREA

113.00 m<sup>2</sup> TOTAL COVERED AREA

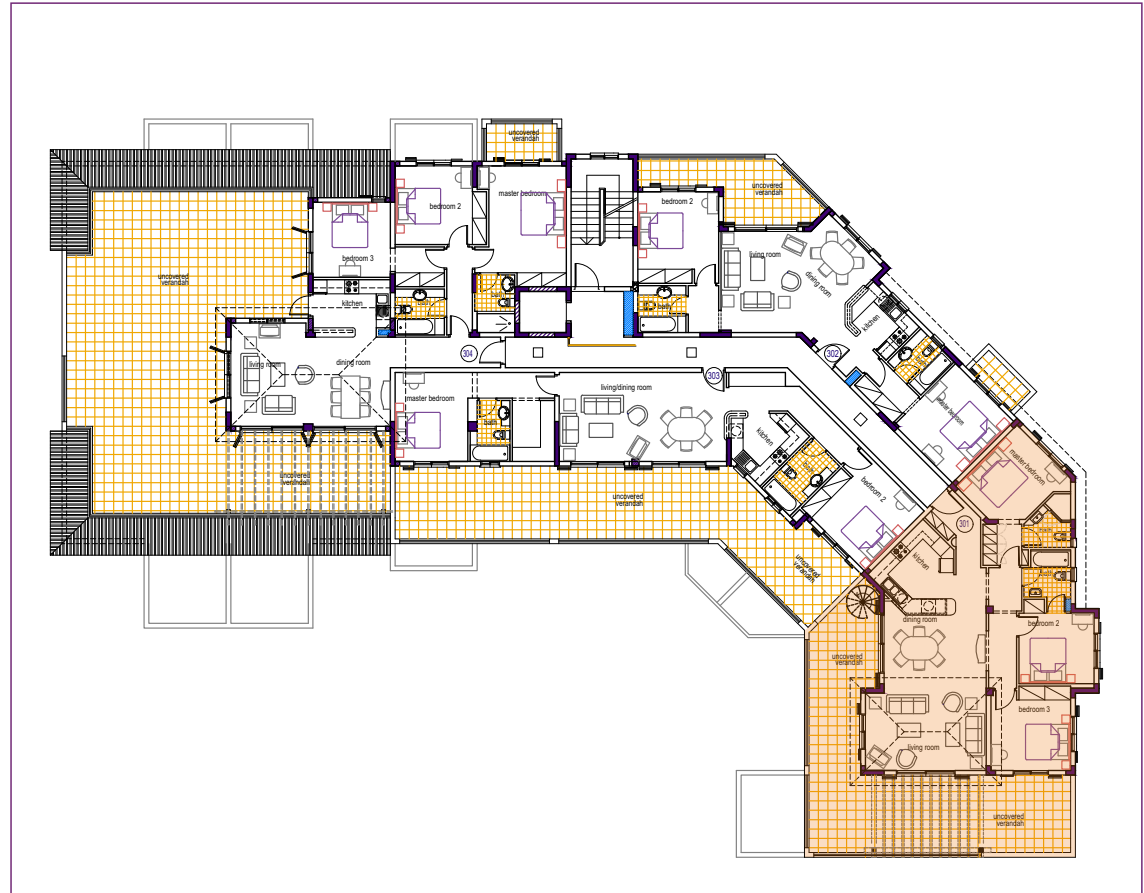
62.00 m<sup>2</sup> UNCOVERED VERANDA

**Chestertons Cyprus Residential**  
Basilica Gardens Harbour Branch - 1,  
Ledas Street, Block 5 ,8041, Paphos, Cyprus  
info@chestertons.com.cy  
+357 26880124  
chestertons.com.cy

# APARTMENT 301



PRELIMINARY APARTMENT PLAN



THIRD FLOOR LAYOUT: BLOCK B

Chesterton Global Ltd trading as Chestertons for themselves and for the vendor of this property whose agents they are, give notice that (i) these particulars do not constitute any part of an offer or contract, (ii) all statements contained within these particulars are made without responsibility on the part of Chestertons or the vendor, (iii) whilst made in good faith, none of the statements contained within these particulars are to be relied upon as a statement or representation of fact, (iv) any intending purchasers must satisfy themselves by inspection or otherwise as to the correctness of each of the statements contained within these particulars, (v) the vendor does not make or give either Chestertons or any person in their employment any authority to make or give representation or warranty whatsoever in relation to this property. Wide angle lenses may be used. ©Copyright Chestertons | Chesterton Global Ltd | Registered Office 40 Connaught Street, Hyde Park, London W2 2AB Registered Company Number 05334580.